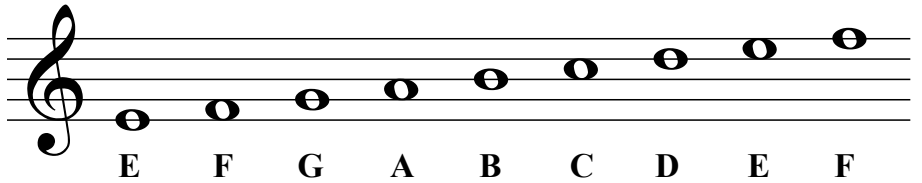


# The Staff - Treble Clef

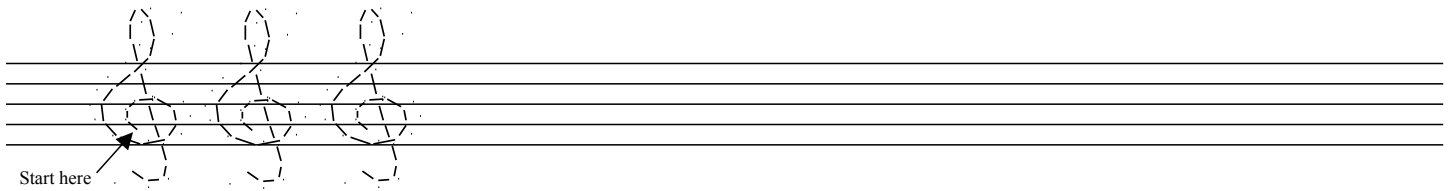
A **clef** appears at the beginning of each staff. The clef shown here is a **treble clef**.



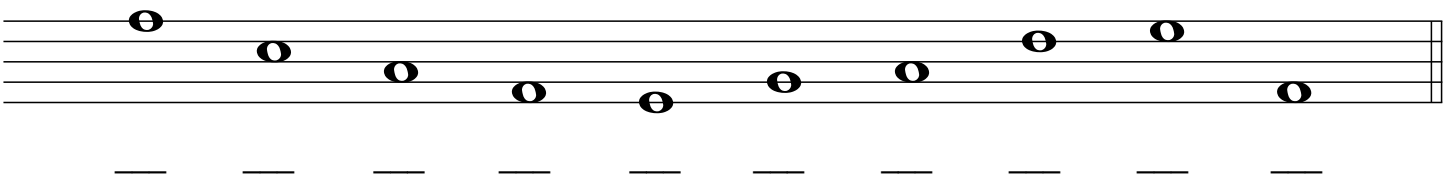
Each note on the treble clef staff has a letter name.



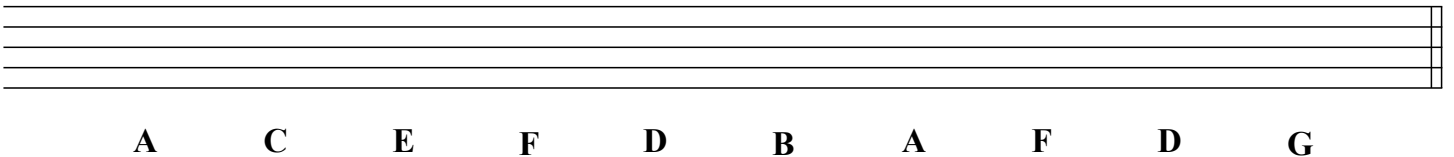
1. Practice drawing the treble clef sign by tracing over the guidelines. Draw five more in the remaining space.



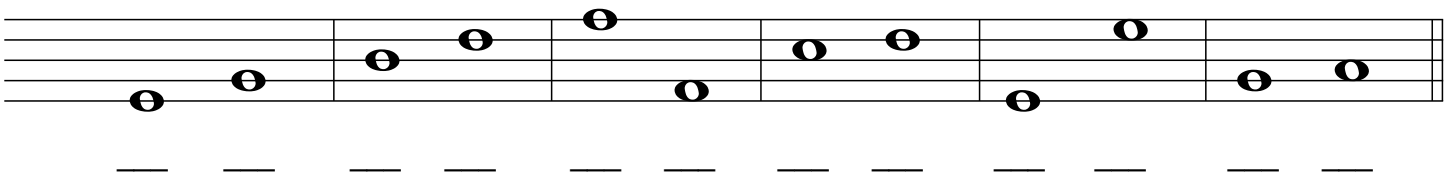
2. Draw a treble clef at the beginning of the staff and write the letter name of each note.



3. Draw the treble clef at the beginning of the staff and then draw the notes indicated.  
If a note can be drawn in more than one place on the staff, choose which one you want to draw.



4. Draw the treble clef at the beginning of the staff.  
Write the letter name for each note, then circle the higher note in each pair.



5. Draw the treble clef at the beginning of the staff.  
Write the letter name for each note, then circle the lower note in each pair.

