

Compound Time Signatures

Duple	$\frac{6}{4}$	6 ♪	$\frac{6}{8}$	6 ♪	$\frac{6}{16}$	6 ♪
Triple	$\frac{9}{4}$	9 ♪	$\frac{9}{8}$	9 ♪	$\frac{9}{16}$	9 ♪
Quadruple	$\frac{12}{4}$	12 ♪	$\frac{12}{8}$	12 ♪	$\frac{12}{16}$	12 ♪

In **compound time**, **beats** can be subdivided into **three** equal notes. For example:

$\frac{6}{8} = \text{♪} \text{♪} = \text{♪♪♪} \text{♪♪♪}$ or $\frac{9}{8} \text{♪} \text{♪} \text{♪} = \text{♪♪♪} \text{♪♪♪} \text{♪♪♪}$
 123 456 1 2 3 4 5 6 123 456 789 1 2 3 4 5 6 7 8 9

Therefore: **1 beat** in $\frac{6}{4}$, $\frac{9}{4}$ and $\frac{12}{4}$ is equal to a ♩.

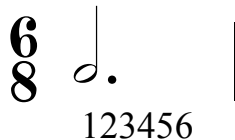
1 beat in $\frac{6}{8}$, $\frac{9}{8}$ and $\frac{12}{8}$ is equal to a ♪.

1 beat in $\frac{6}{16}$, $\frac{9}{16}$ and $\frac{12}{16}$ is equal to a ♫.

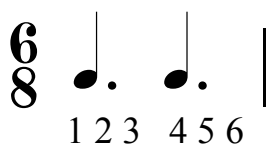
	SIMPLE TIME	COMPOUND TIME
2 beats in a bar	$\frac{2}{4}$ ♩ ♩	$\frac{6}{8}$ ♪ ♪
3 beats in a bar	$\frac{3}{4}$ ♩ ♩ ♩	$\frac{9}{8}$ ♪ ♪ ♪
4 beats in a bar	$\frac{4}{4}$ ♩ ♩ ♩ ♩	$\frac{12}{8}$ ♪ ♪ ♪ ♪

Compound Time

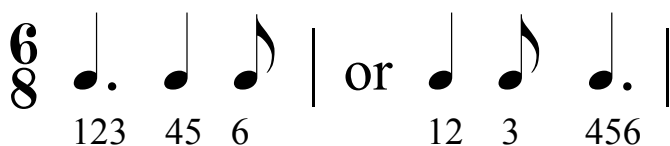
The two dotted crotchet beats of one $\frac{6}{8}$ bar can be arranged as 1 note:



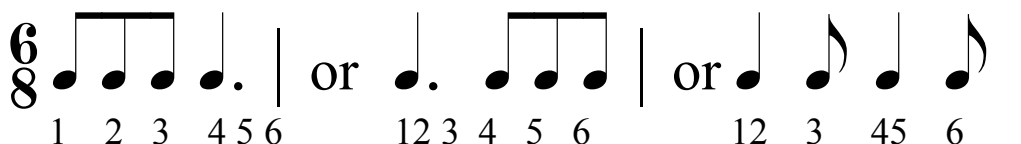
or as 2 notes (**on the two main beats**):



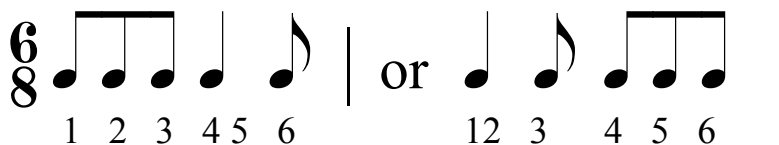
or as 3 notes:



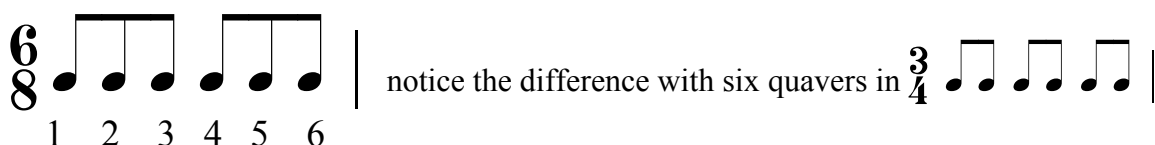
or as 4 notes:



or as 5 notes:



or as 6 notes:



THERE ARE MANY MORE POSSIBILITIES!