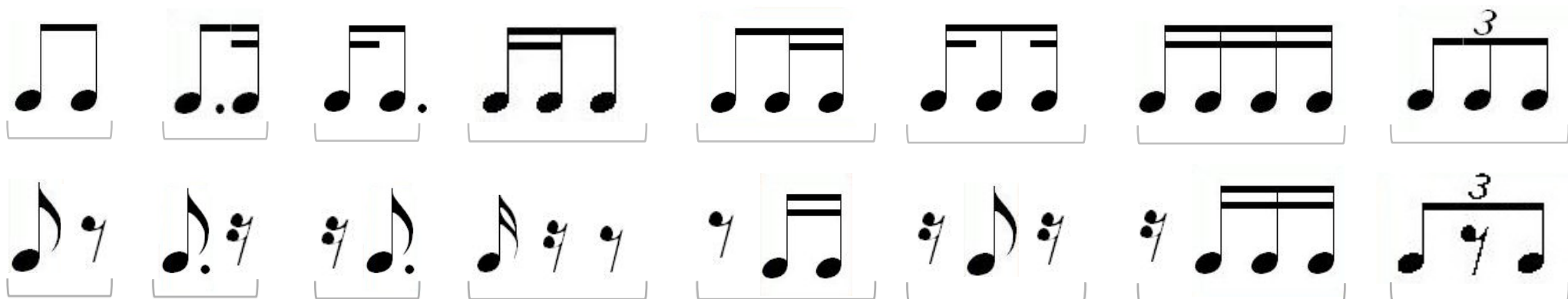


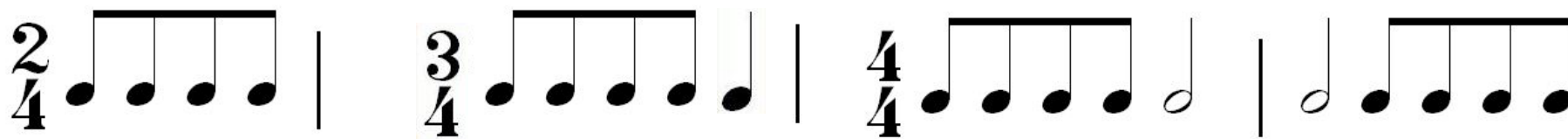
# Grouping in Simple Time Signatures

1) Group together any notes and rests that ADD UP TO 1 BEAT!

In  $\frac{2}{4}$   $\frac{3}{4}$   $\frac{4}{4}$  one beat =  which can lead to many possible groups:



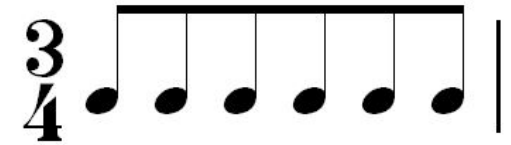
2) Group together four quavers which could be replaced by a minim!



3) Never beam or put rests across the middle of a four beat bar!



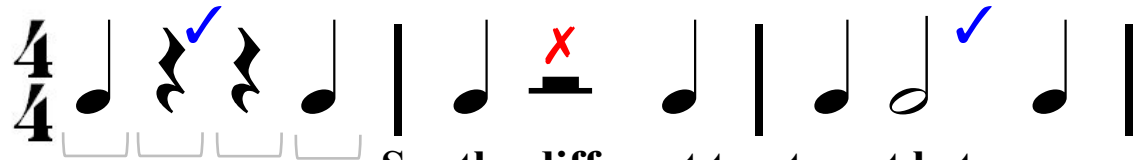
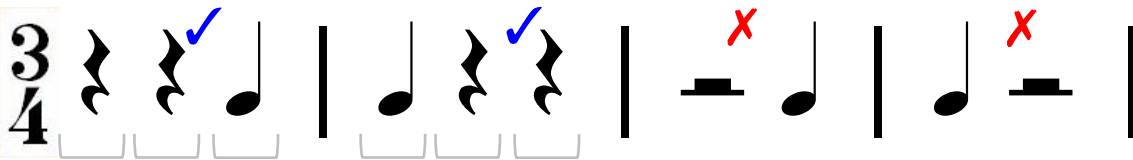
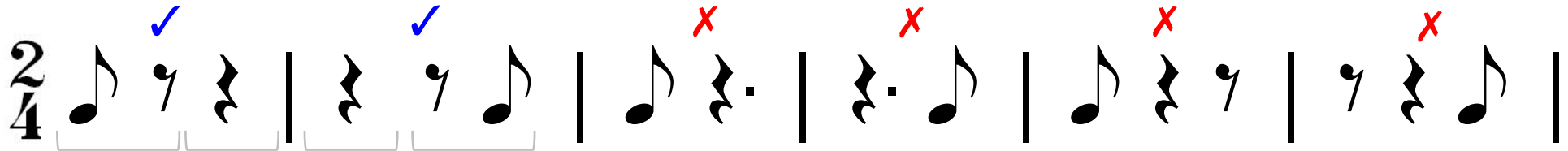
4) In  $\frac{3}{4}$  you beam six quavers together



5) In  $\frac{3}{8}$  you beam six semiquavers together



6) Every full silent beat gets a rest. So no dotted rests in simple time!



A minim rest can be used only like this for two beats in quadruple time!



See the different treatment between minim rests and minim notes (see Rule 3)

7) If the silence is not a full beat, then every subdivision gets a rest.

