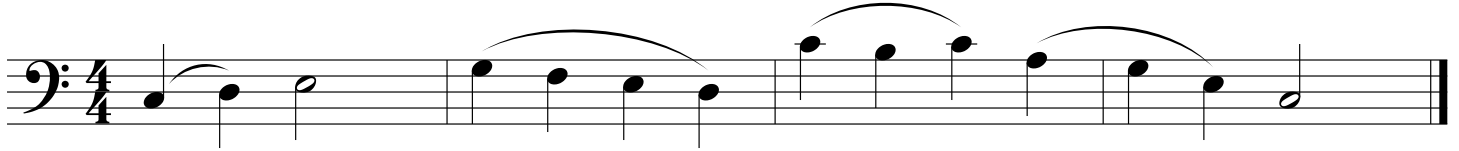


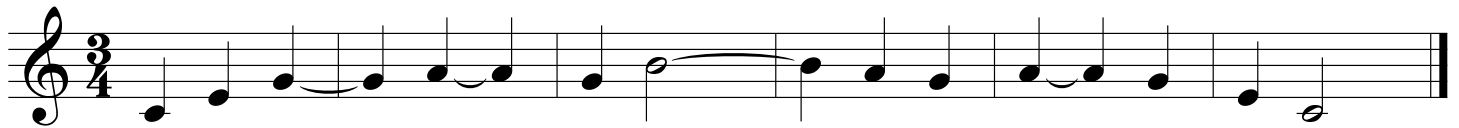
Slurs and Ties

A **slur** is a curved line connection *two or more* notes of *different* pitches.

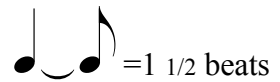
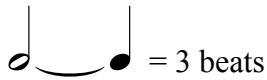
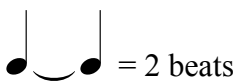
Slurred passages should be played as smoothly as possible.



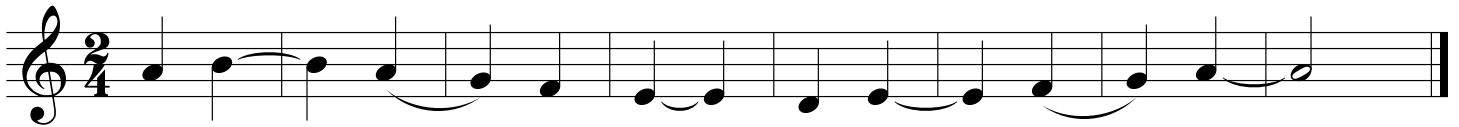
A **tie** is a curved line which connects *two* notes of the *same* pitch.



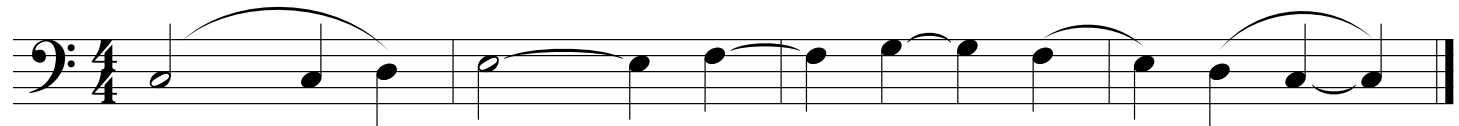
Tied notes are played as one note. The rhythmic value is the sum of the two notes.



1. Circle the ties in this example.



2. Circle the slurs in this example.



3. Write the number of beats each pair of tied notes should receive.

