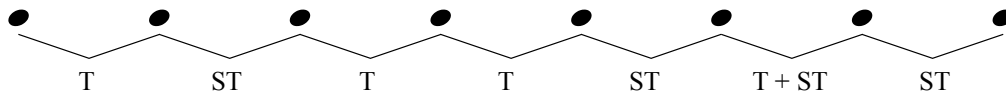


Name \_\_\_\_\_

Date \_\_\_\_\_

# Harmonic Minor Scale Ia - $\text{Bb}$

All Harmonic Minor scales are made up of the following pattern of whole steps and half steps:



Add sharps or flats to the exercises below to create Harmonic Minor scales.

Use the pattern of whole and half steps to determine which accidentals you will need to add.

*Example*

An example of a Harmonic Minor scale Ia in B-flat major. The scale is written on a bass clef staff. The notes are B-flat, C, D, E-flat, F, G, A-flat, and B-flat. The interval pattern T, ST, T, T, ST, T + ST, ST is indicated below the notes.

1

Exercise 1: A blank bass clef staff with a C-clef. The notes are C, D, E, F, G, A, B, and C. The interval pattern T, ST, T, T, ST, T + ST, ST is indicated below the notes.

2

Exercise 2: A blank bass clef staff with a C-clef. The notes are D, E, F, G, A, B, C, and D. The interval pattern T, ST, T, T, ST, T + ST, ST is indicated below the notes.

3

Exercise 3: A blank bass clef staff with a C-clef. The notes are E, F, G, A, B, C, D, and E. The interval pattern T, ST, T, T, ST, T + ST, ST is indicated below the notes.

4

Exercise 4: A blank bass clef staff with a C-clef. The notes are F, G, A, B, C, D, E, and F. The interval pattern T, ST, T, T, ST, T + ST, ST is indicated below the notes.

5

Exercise 5: A blank bass clef staff with a C-clef. The notes are G, A, B, C, D, E, F, and G. The interval pattern T, ST, T, T, ST, T + ST, ST is indicated below the notes.

6

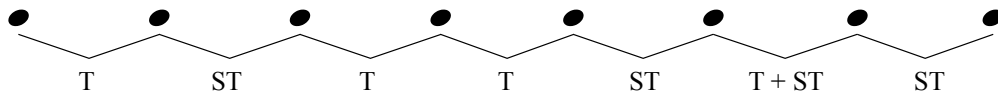
Exercise 6: A blank bass clef staff with a C-clef. The notes are A, B, C, D, E, F, G, and A. The interval pattern T, ST, T, T, ST, T + ST, ST is indicated below the notes.

Name \_\_\_\_\_

Date \_\_\_\_\_

# Harmonic Minor Scale $\text{Ib}$ - $\text{Ib}$

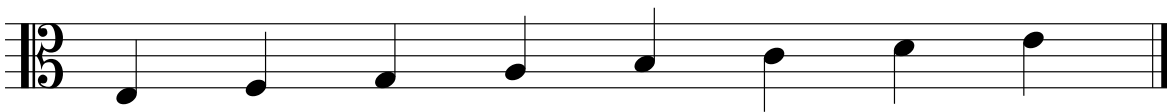
All Harmonic Minor scales are made up of the following pattern of whole steps and half steps:



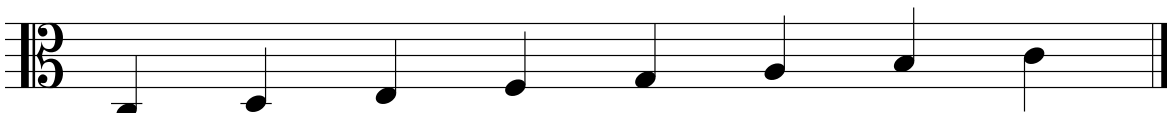
Add sharps or flats to the exercises below to create Harmonic Minor scales.

Use the pattern of whole and half steps to determine which accidentals you will need to add.

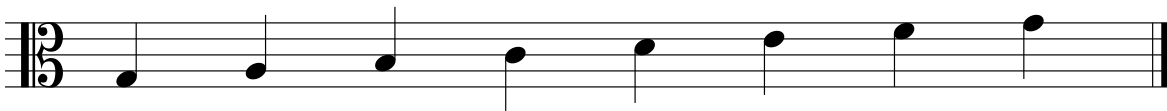
1



2



3



4



5



6

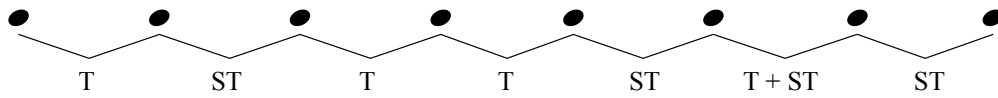


Name \_\_\_\_\_

Date \_\_\_\_\_

# Harmonic Minor Scale Ic - $\text{C}$

All Harmonic Minor scales are made up of the following pattern of whole steps and half steps:



Add sharps or flats to the exercises below to create Harmonic Minor scales.

Use the pattern of whole and half steps to determine which accidentals you will need to add.

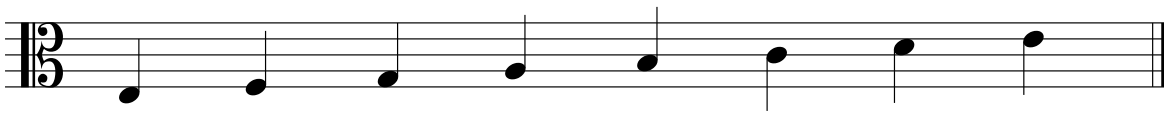
1



2



3



4



5



6

