

Style and Period

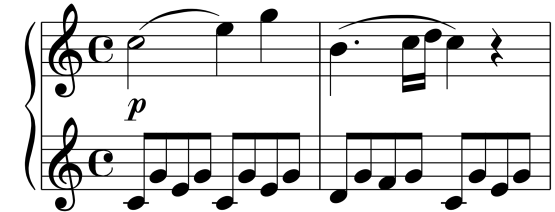
Baroque (1600-1750) Bach, Handel, Scarlatti, Vivaldi, Couperin

- Ornamentation
- Complicated polyphonic melodies
- Thin Texture for keyboard music
- Limited note range (register)
- Limited range of dynamics for keyboard music
- Call-and-response or imitation between upper and lower parts
- Light crisp articulation
- Free bass line
- Steady tempo
- Energetic, lively, dance-like rhythms
- Single mood/character
- Frequent use of sequences



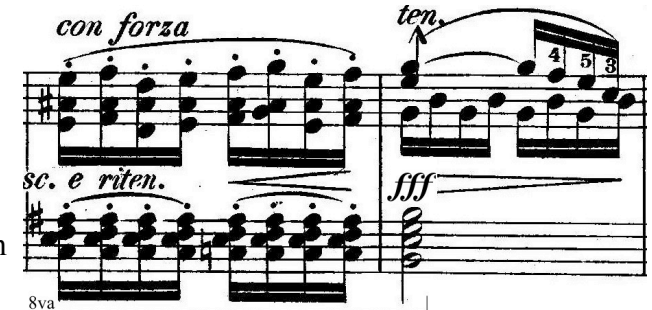
Classical (1750-1800) Early Beethoven, Mozart, Haydn, Clementi

- Simple repetitive melody: graceful/elegant
- Simple harmonic rhythm for accompaniment
- Use of scales and arpeggios for melody
- 'Alberti Bass' in keyboard accompaniment
- Thicker texture (melody + homophony)
- Regular, clearly defined phrases (4 or 8 bars)
- Less ornamentation (clearer melody)
- Greater note range (register)
- Greater range of dynamics (*ff* to *pp*)
- Use of *crescendo* and *diminuendo*
- Greater use of tempo changes including *rallentando* and *accelerando*



Romantic (1800-1900) Chopin, Grieg, Schubert, Schumann, Liszt, Mendelssohn

- Very thick homophonic texture: rich harmonies that use full, thick chords (many notes at once)
- Full note range (register) of the instrument!
- Full range of dynamics (*ffff* to *pppp*)
- Sudden and extreme changes in dynamics
- Very flexible tempo 'rubato'
- Frequent use of pedal in keyboard music
- Full range of emotion (lots of character)
- Advanced harmony & distant modulations
- Lyrical, song-like 'cantabile' melodies
- Extended phrasing that is less defined than music from the Classical period



20th Century/Modern (1900-to present) Bartok, Stravinsky, Schoenberg, Gershwin, Cage, Messiaen

- Strange unsettling melodies (atonal & modal)
- Dissonant (clashing) chromatic harmony
- Bluesy melody and harmony
- Jazzy/syncopated rhythms
- Spiky vigorous rhythms (lack of metre/pulse)
- Sudden and extreme changes in dynamics
- Very flexible tempo 'rubato'
- Full note range (register)
- Percussive sounds & Crushed notes
- Off-beat accents
- Avoid the 'tyranny of the bar line!'
- Chords used purely for individual qualities

